



Heat Plates & Oven Baskets Convection Oven Accessories

Oven Baskets: For all Cadco Quarter Size, Half Size, & Full Size Convection Ovens



COB-Q

Quarter Size Oven Basket



COB-H

Half Size Oven Basket



COB-F

Full Size Oven Basket

FEATURES

- Aluminum oven baskets
- Enhance even airflow around food for quicker, crisper results
- Fits in Cadco convection ovens & most other brands
- 30-day warranty for initial defects only
- Freight Class 200

APPLICATIONS

- Potato Product: potato puffs, hash browns, roasted potatoes
- Seafood: shrimp, fish sticks, oven specific battered fish
- Fries: Krinkle cut, curly
- Chicken Wings: Buffalo, BBQ
- Chicken Product: Nuggets, Tenders
- Onion rings
- Roasted vegetables
- Appetizers: corn dogs, mozzarella sticks, stuffed jalapenos, etc.



Heat Plates: For all Cadco Quarter Size, Half Size, and Full Size Convection Ovens

These exclusive Heat Plates bake everything in shorter time. For *fast* baking of pizza, breads, and other baked goods

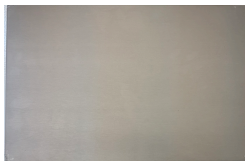
CAP-F

Full Size
Pizza Heat
Plate



CAP-H

Half Size
Pizza Heat
Plate



CAP-Q

Quarter Size
Pizza Heat
Plate



- Aluminized Steel *CrisPlate*™ Models

- Heat Plates provide fast baking times, up to 50% faster than traditional baking pans. It takes as little as 4-5 minutes to bake a fresh Pizza on the Heat Plate!
- Manufactured from alloys which provide superior heat storage and produce fast, even cooking of both top and bottom of the food product simultaneously.
- Hard coat anodized non-stick baking surface
- Plates help ovens maintain better temperature stability under normal door opening/closing conditions
- 30-day warranty for initial defects only
- Freight class 200

Model	Color	Unit Dimensions	Unit Wt.	Ship Wt.	Carton Dimensions	Cube
COB-Q	Aluminum	w:12 7/8" x d:9 1/2" x h:1 1/2"	0.4 lbs	3 lbs	w:17 1/4" x d:14 1/4" x h:1 3/4"	0.25
COB-H	Aluminum	w:17 7/8" x d:12 3/4" x h:1 1/2"	0.6 lbs	3.5 lbs	w:18 3/4" x d:14 1/4" x h:1 3/4"	0.27
COB-F	Aluminum	w:25 3/4" x d:17 5/8" x h:1 1/2"	1.25 lbs	4 lbs	w:28" x d:18" x h:2"	0.6
CAP-Q	Dk. Gray	w:13 1/2" x d:9 1/2" x h:1/4"	3.1 lbs	4 lbs	w:17 1/4" x d:14 1/2" x h: 3/4"	0.11
CAP-H	Dk. Gray	w:18 3/8" x d:12" x h:1/4"	5.3 lbs	7 lbs	w:18 3/4" x d:14 1/2" x h:1/2"	0.08
CAP-F	Dk. Gray	w:26 1/4" x d:17 7/8" x h:1/4"	11.2 lbs	13 lbs	w:27" x d:19" x h:3/4"	0.22

**Due to continual product improvement, all product specifications, designs, and prices are subject to change without notice.

