

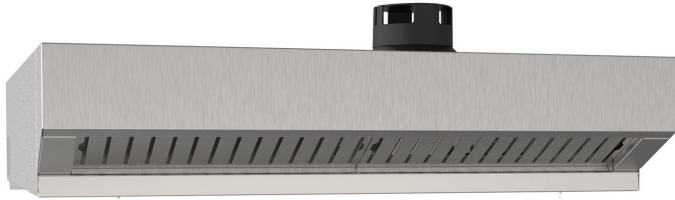


Ventless System for Bakerlux Digital Convection Ovens

*Cadco's Vapor Catching and Condensing Systems
Removes odors and grease laden vapors expelled by exhaust*



CSA Standard
APPROVED



XAKHT-HCFS: Full Size Ventless System
for Cadco LED/TOUCH Convection Ovens



NEMA 6-15P



XAKHT-HCHS: Half Size Ventless System
for Cadco LED/TOUCH Convection Ovens



NEMA 6-15P

UL evaluated under the KNLZ category "Commercial Cooking Appliances with Integral Systems For Limiting the Emission Of Greaseladen Air". Using EPA test method 202 emissions of grease laden vapor were measured at 0.24 mg/m³. Results are less than the established 5 mg/m³. **Please allow 4 inches of clearance in the back and 2 inches of clearance on the side for proper airflow to maximize the performance and to prevent any issues or damages to the product.**

Electrical set up for ventless system not required, as a power cable will connect to the oven (top oven, if stacked)

- Water connection required for proper installation: (3/4" bibb connection or directly to a 5/16" OD hose)
- Filtration is highly recommended to prevent scale build up.
- Drain line -or- floor drain is required.
- To maintain warranty coverage, the ventless system must be connected to a direct, uninterrupted water supply. Units operated without a proper water connection are not covered under warranty.

FEATURES

- Removes odors & grease laden vapors expelled by the exhaust & when opening door
- No outside venting required
- Certified ANSI UL 710B approved recirculating hood system
- Subject to verification & approval by authorities & local regulations
- Factory installed unless ordered separate
- Compatible with Bakerlux™ LED & TOUCH oven models only
- NSF, UL, UL 710B Emissions/listed by UNOX S.p.A.,
- CSA standard approved
- One year on-site warranty
- 208-240V/200W/1A/ Single Phase
- NEMA 6-15P Plug
- Freight Class 200 NOTE: No UPS

NOTE the ventless system thermostat condensing chamber may be triggered if oven door is open for extended time. Causing excessive water usage. For more information on decreased or increased water usage applications within the hood please reach out to us 877-603-7393 or baking@cadco-ltd.com

Model	Color	Unit Dimensions	Unit Wt.	Ship Wt.	Carton Dimensions	Cube
XAKHT-HCFS	Stainless	w: 31 1/2" x h: 9 1/2" x d: 33 18/32"	65 lbs	77 lbs	w: 40" x h: 16" x d: 48"	17.77
XAKHT-HCHS	Stainless	w: 23 22/32" x h: 9 1/2" x d: 28 10/32"	45 lbs	55 lbs	w: 40" x h: 16" x d: 48"	17.77

**Due to continual product improvement, all product specifications, designs, and prices are subject to change without notice.

11/27/2025 REV06



www.cadco-ltd.com



860.738.2500



info@cadco-ltd.com